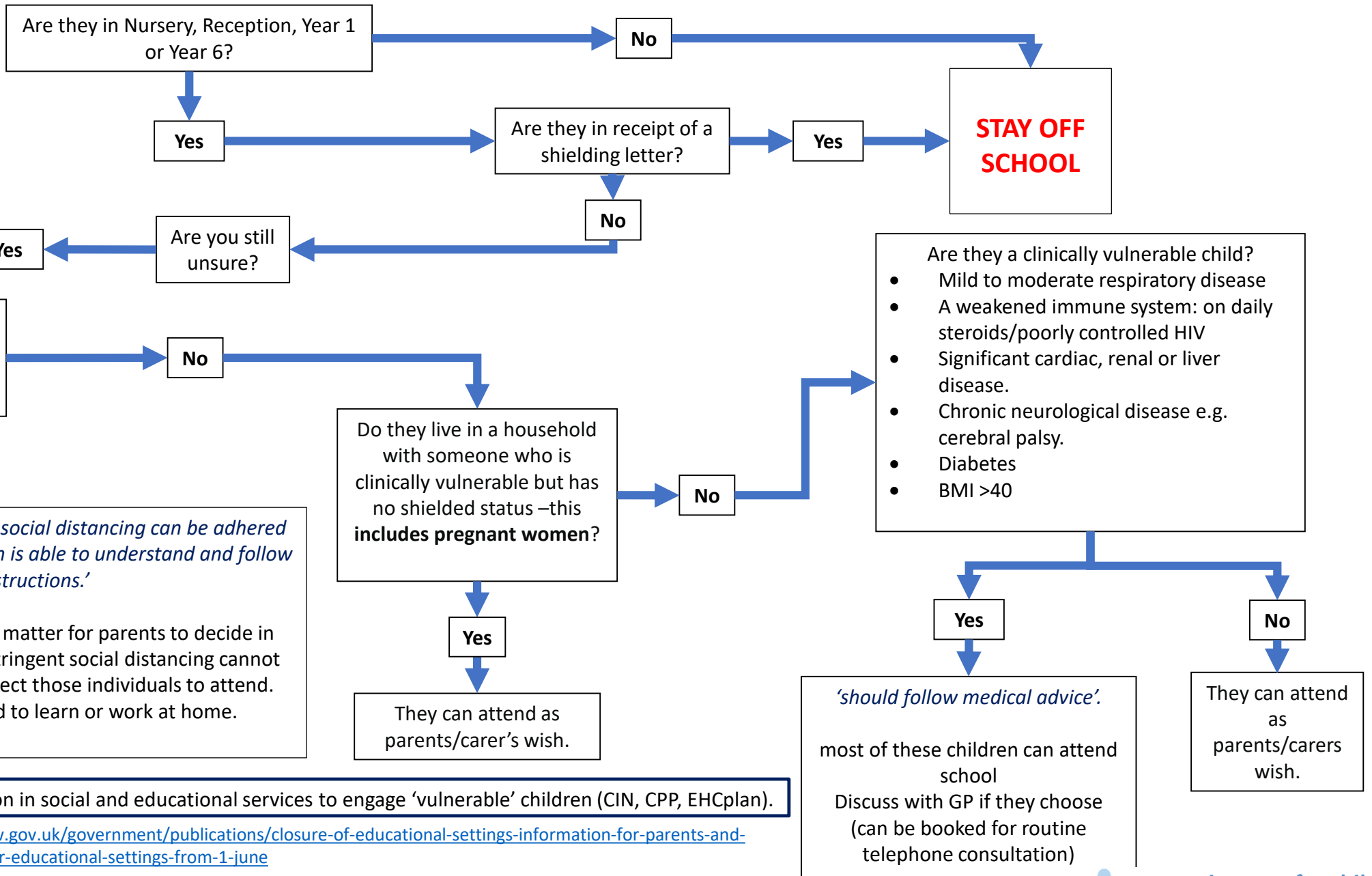


SHOULD THIS PATIENT GO TO SCHOOL, A GUIDE FOR GPs



There is dedicated work going on in social and educational services to engage ‘vulnerable’ children (CIN, CPP, EHCplan).

Quotes in italics from: <https://www.gov.uk/government/publications/closure-of-educational-settings-information-for-parents-and-carers/reopening-schools-and-other-educational-settings-from-1-june>